


# Using RightARM Utility to Load Firmware

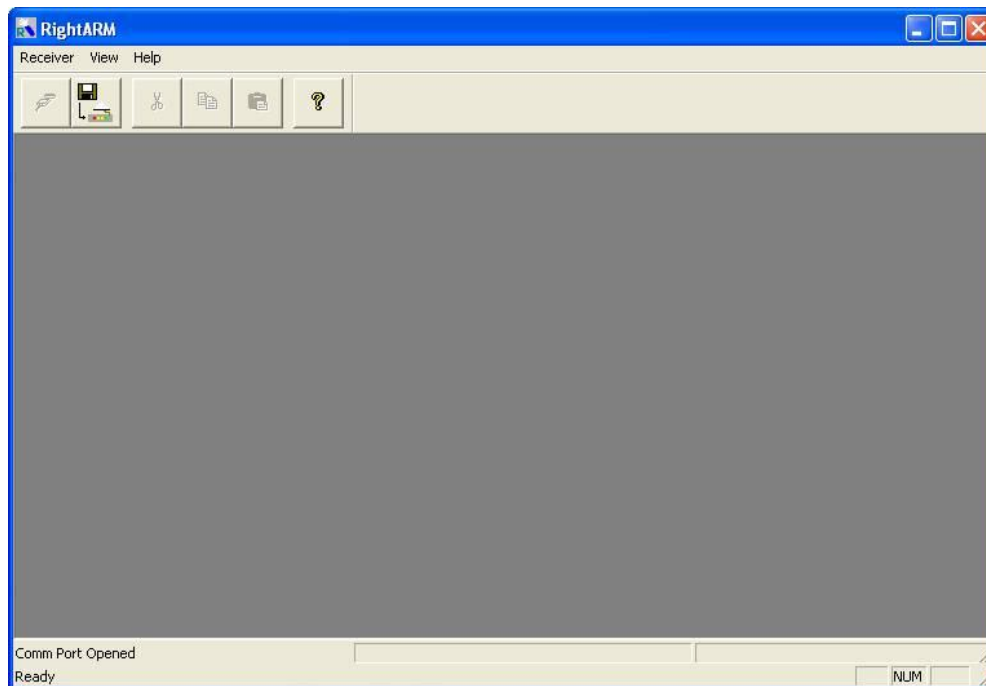
Part Number 874-0020-000 Released April 12, 2012


## OVERVIEW:

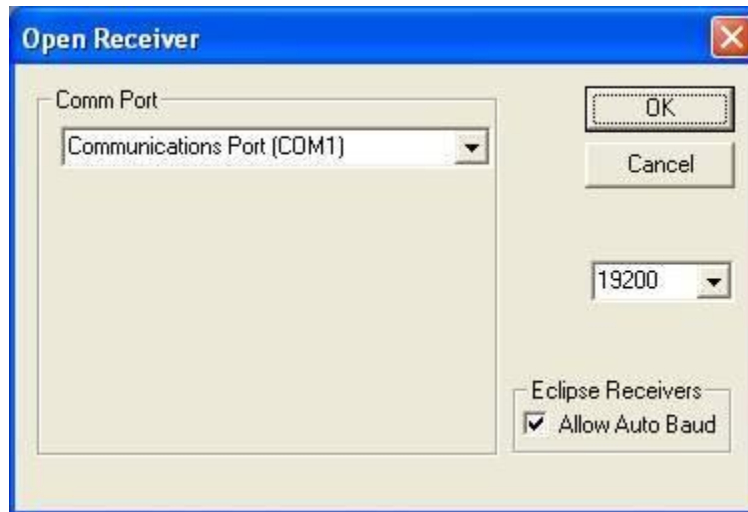
RightARM is Hemisphere GPS software that allows you to load the various GPS receiver firmware options and updates as they are provided by Hemisphere GPS.

## PROCEDURE:

1. Download the latest version of RightARM from <http://www.hemispheregps.com/Support/PrecisionProductSupport/Receivers/Software/tabid/558/Default.aspx> Install RightARM application on your computer.
2. Connect the receiver to your computer and power on the receiver.
3. Double-click the RightARM icon  to launch the program. The following screen appears.



4. Click the **Open Receiver** button  or select **Receiver > Connect**. The Open Receiver window appears, so you can identify a connected receiver.

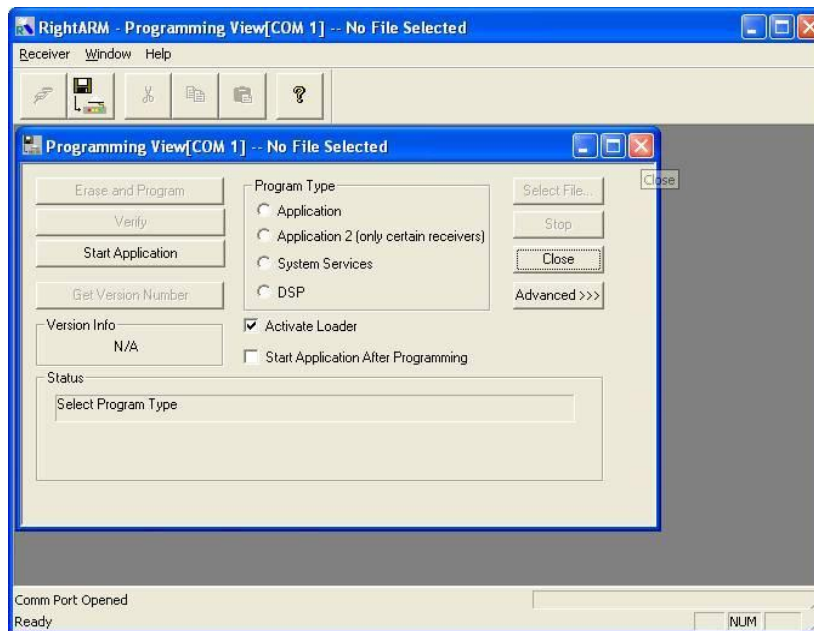


5. Select the **Comm Port** on your computer to which the receiver is connected, select the 19200 baud rate for the receiver, and then click **OK**.

**Note:** You must set the baud rate to 19200..

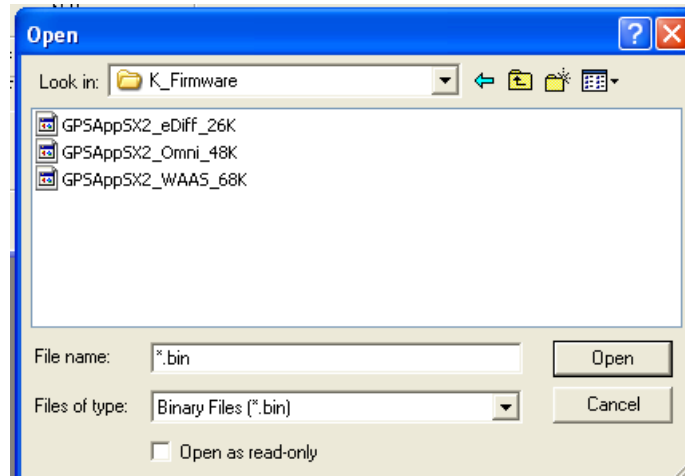


6. Click the **Programming View** button. The Programming View window appears, enabling you to select different firmware programming options.



7. Select the **Program Type** you want to install and then click **Select File**. The Open window appears.

**Note:** Most Hemisphere GPS receivers have two application locations available for firmware. In this case, select the Application option under Program Type and follow the remaining steps. Once the process is complete, you will repeat the process, selecting the Application 2 option when you reach this step again.



8. Select the required firmware file from the location where you saved it on your computer and click **Open**. "File Loaded" appears in the status window on the Programming View window.
9. Click the **Erase and Program** button to erase the firmware that is currently installed on the receiver in the selected application location and install the newly selected file in its place. "Erasing...Please Wait" appears in the Status field and a progress bar below this message indicates the programming progress. Once the new firmware has been successfully loaded on the receiver "Programming Done" appears in the Status field.

**Note:** Before pressing the Erase and Program button, the Activate Loader check box in the Programming View window will be selected. After pressing the Erase and Program button, the check box should be cleared and the Status field should show that the receiver is in loader mode and ready to receive the new firmware file. If the Activate Loader check box remains selected, turn the receiver off and then back on again, close and restart RightARM, and then start over at step 5.

**WARNING:** Do not interrupt the power supply to the receiver, and do not interrupt the communication link between the PC and the receiver until programming is complete. Failure to do so may cause the receiver to become inoperable and will require it to be returned to the factory for repair.

10. Once the appropriate firmware has been loaded, click the **Close** button to close the Programming View window.

**Note:** If a second application needs to be loaded, turn off the receiver, repeating all the steps starting at step 4, and on step 8 select the Application 2 option from the Program Type field.

11. Exit RightARM, turn off your receiver, and then disconnect the receiver from your computer.

### ***FURTHER INFORMATION:***

Consult [www.HemisphereGPS.com](http://www.HemisphereGPS.com) for the latest information, or contact your dealer.

For support via email, please contact [TechSupport@HemisphereGPS.com](mailto:TechSupport@HemisphereGPS.com)

This document is provided for technical support purposes only. Please refer to the product documentation for warranty, license and safety information associated with the product.